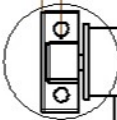
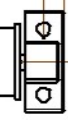


Gesamtbreite (Total dimension) =  $A+16$

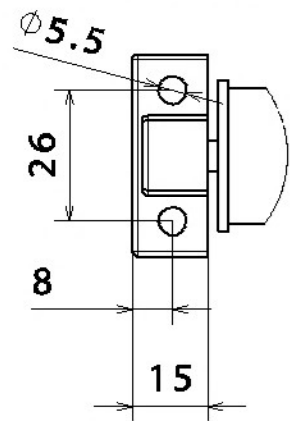
Mass (Dimension) =  $A$



A



Detail A



Mass (Dimension) =  $B$

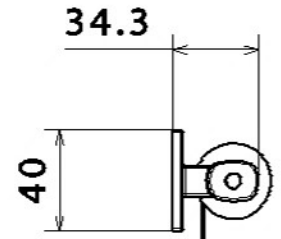
Stoffbreite (Fabric dimension) =  $A-45$

Type 18



Mass (Dimension) =  $D^*$

\*Standard = Stoffbreite (Fabric width) + 70



Einhängehaken  
(Hook) = Standard E1