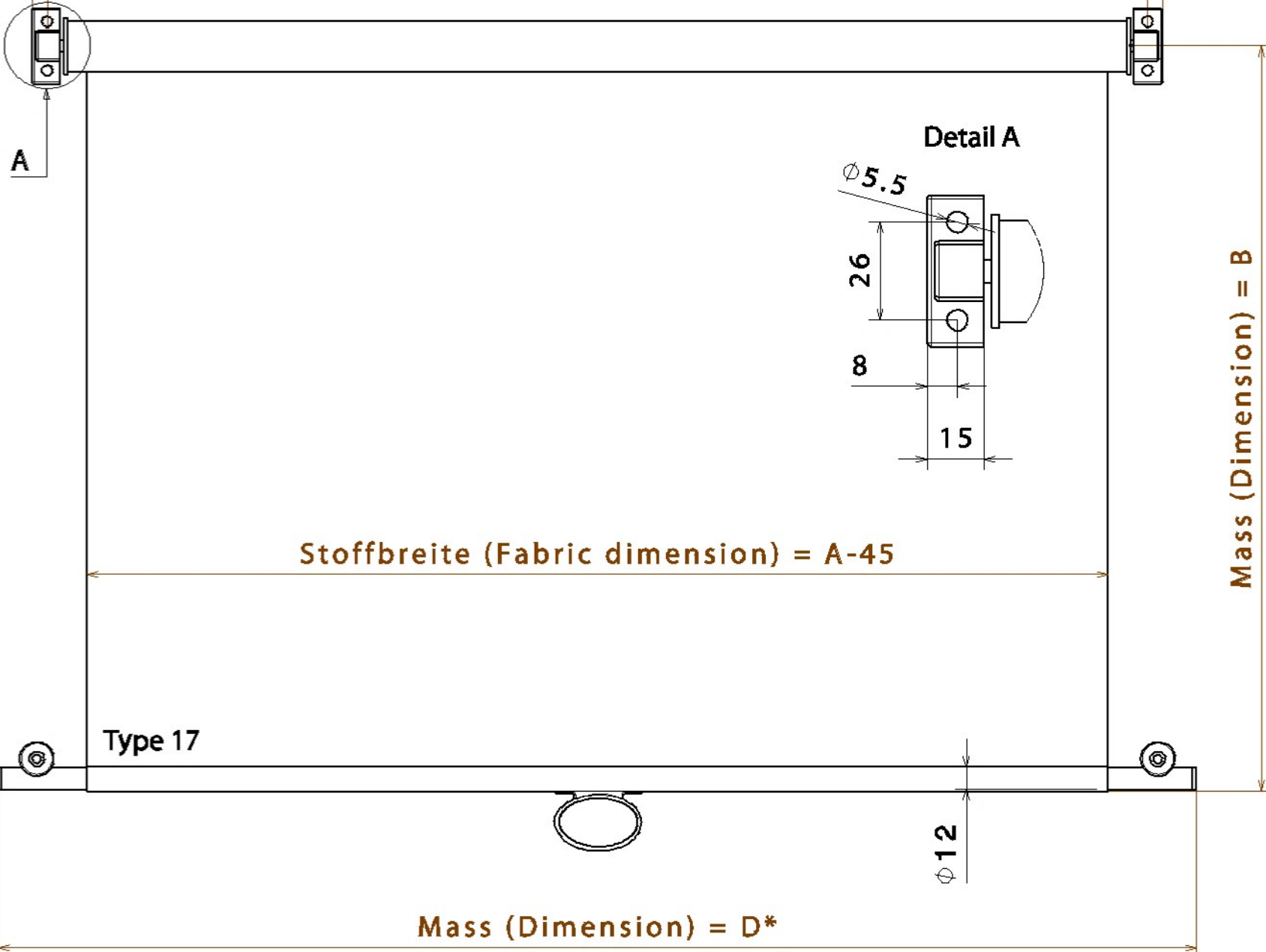


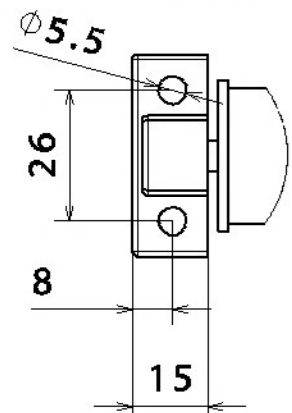
Gesamtbreite (Total dimension) = $A+16$

Mass (Dimension) = A



A

Detail A



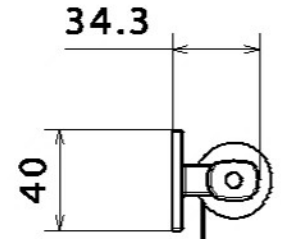
Stoffbreite (Fabric dimension) = $A-45$

Type 17

$\phi 12$

Mass (Dimension) = D^*

*Standard = Stoffbreite (Fabric width) + 70



Mass (Dimension) = B

Einhängehaken
(Hook) = Standard E1