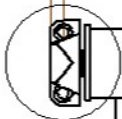


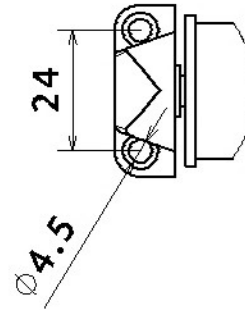
Gesamtbreite (Total dimension) = $A+10$

Mass (Dimension) = A



A

Detail A



Stoffbreite (Fabric dimension) = $A-45$

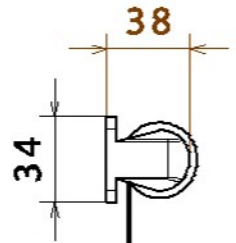
Mass (Dimension) = B

Type 19

$\phi 12$

Mass (Dimension) = D^*

*Standard = Stoffbreite (Fabric width) + 70



Einhängehaken
(Hook) = Standard E1